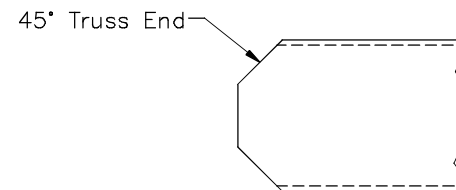
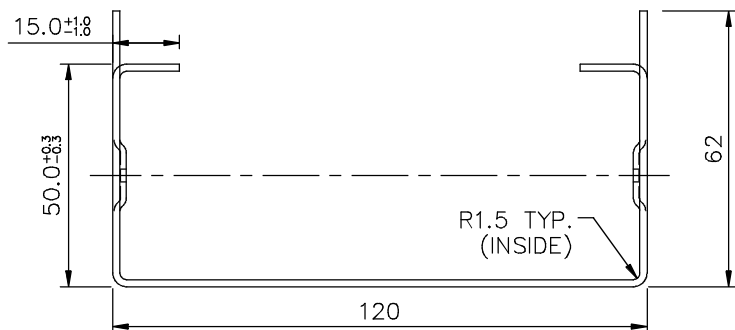


**SECTIONAL PROPERTIES**  
 Area 383.4 mm<sup>2</sup>  
 Centroid Relative to Origin  
 C<sub>x</sub> 0 mm  
 C<sub>y</sub> 15.9 mm  
 Second Moment of Area  
 I<sub>x</sub> 132,419.1  
 I<sub>y</sub> 865,980.1 mm<sup>4</sup>  
 Polar Moment of Inertia  
 J<sub>z</sub> 998,399.2 mm<sup>4</sup>



Note:  
 Non-specified Tolerances ± 0.1mm

| ISSUE | NOTES | DATE |
|-------|-------|------|
|       |       |      |

| TOLERANCES                                  |  | TITLE   |             |
|---|--|---|-------------|
| XX = ± 1.0                                  |  | Ruco 120x50x15 Frama Profile  |             |
| XX.X = ± 0.1                                |  | MATERIAL  | 1.6mm       |
| XX.XX = ± 0.03                              |  | FINISH  | Galv.       |
| STANDARD TOLERANCES UNLESS OTHERWISE STATED |  | DRAWN   | T. Cornwall |
|   |  | CHECKED   | 11/5/2017   |
|   |  | APPROVED  |             |
|   |  | ALL DIMENSIONS ARE IN mm. - UNLESS OTHERWISE STATED. DO NOT SCALE - IF IN DOUBT, ASK. |             |
|   |  | SCALE   | 1:1         |

**HOWICK**  
 INNOVATION... READY TO ROLL  
 COPYRIGHT HOWICK LTD. ©

DWG. No. Ruco 120x50  
 A3